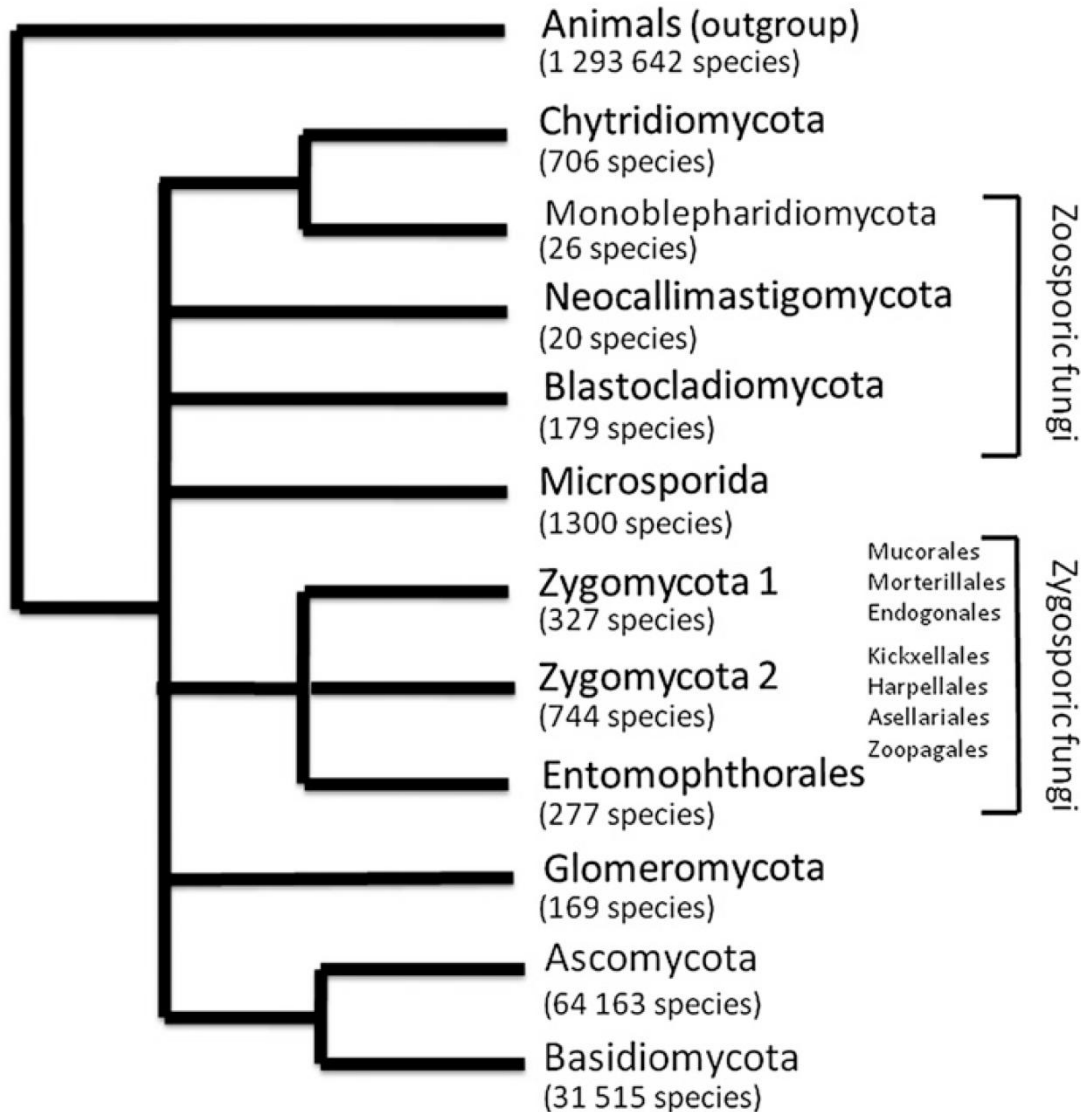


Diversidad y distribución global de Hongos



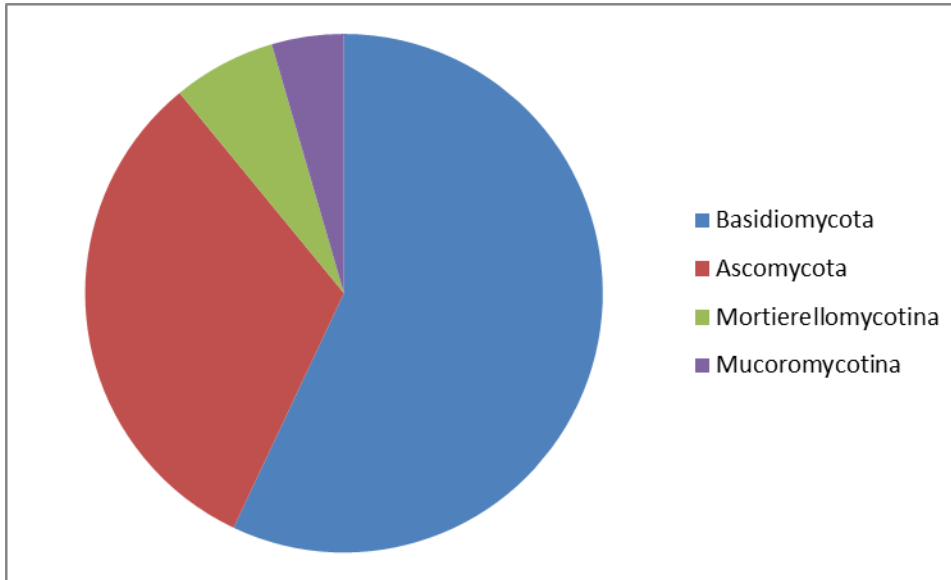
Diversidad de hongos en base a colecciones



Riqueza (%)

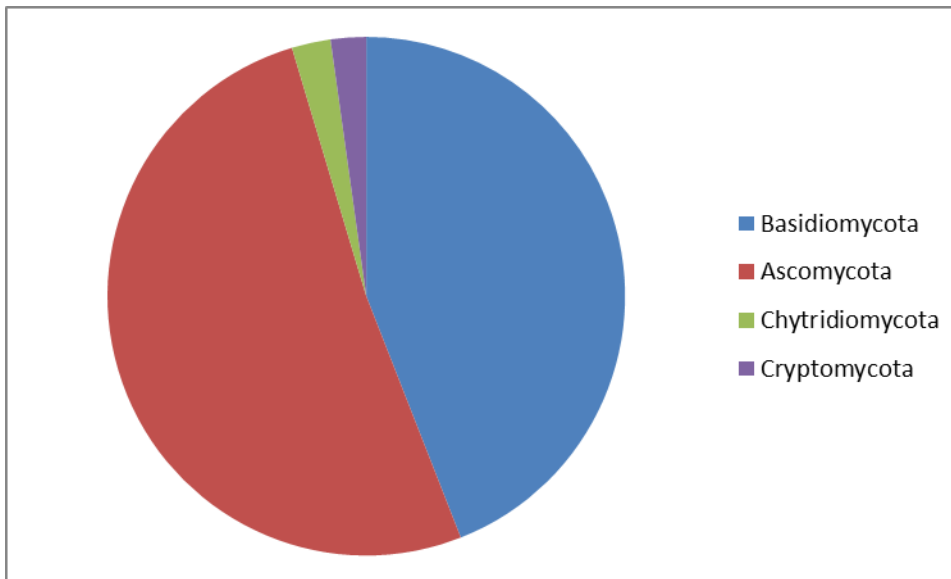
Ascomycota	65
Basidiomycota	32
Zygomycota	1
Chytridiomycota	1
Microsporidia	1

Análisis global de secuencias de hongos en el suelo



Abundancia (%)

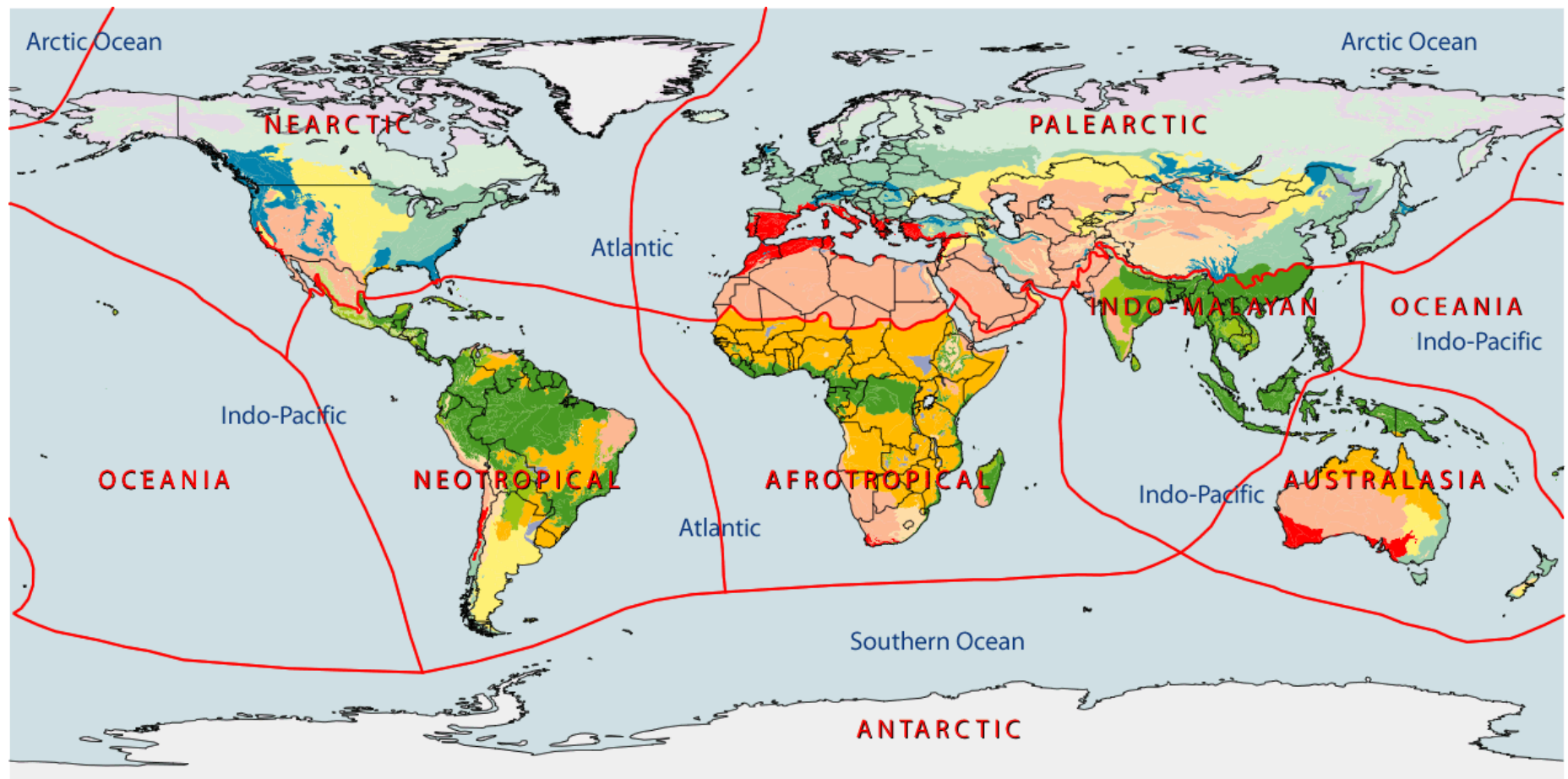
Basidiomycota	55,7
Ascomycota	31,3
Mortierellomycotina	6,3
Mucoromycotina	4,4



Riqueza (%)

Ascomycota	48,7
Basidiomycota	41,8
Chytridiomycota	2,3
Cryptomycota	2,1

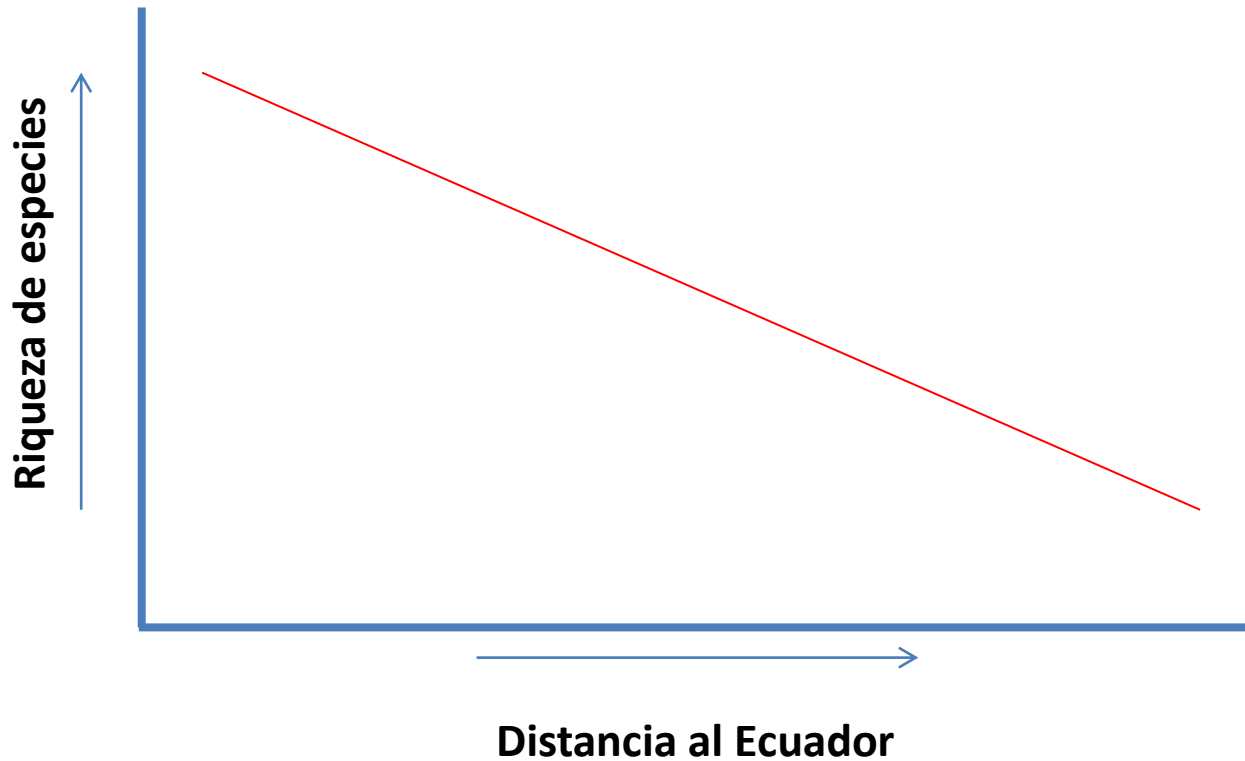
**¿Cómo se distribuye esa
diversidad?**



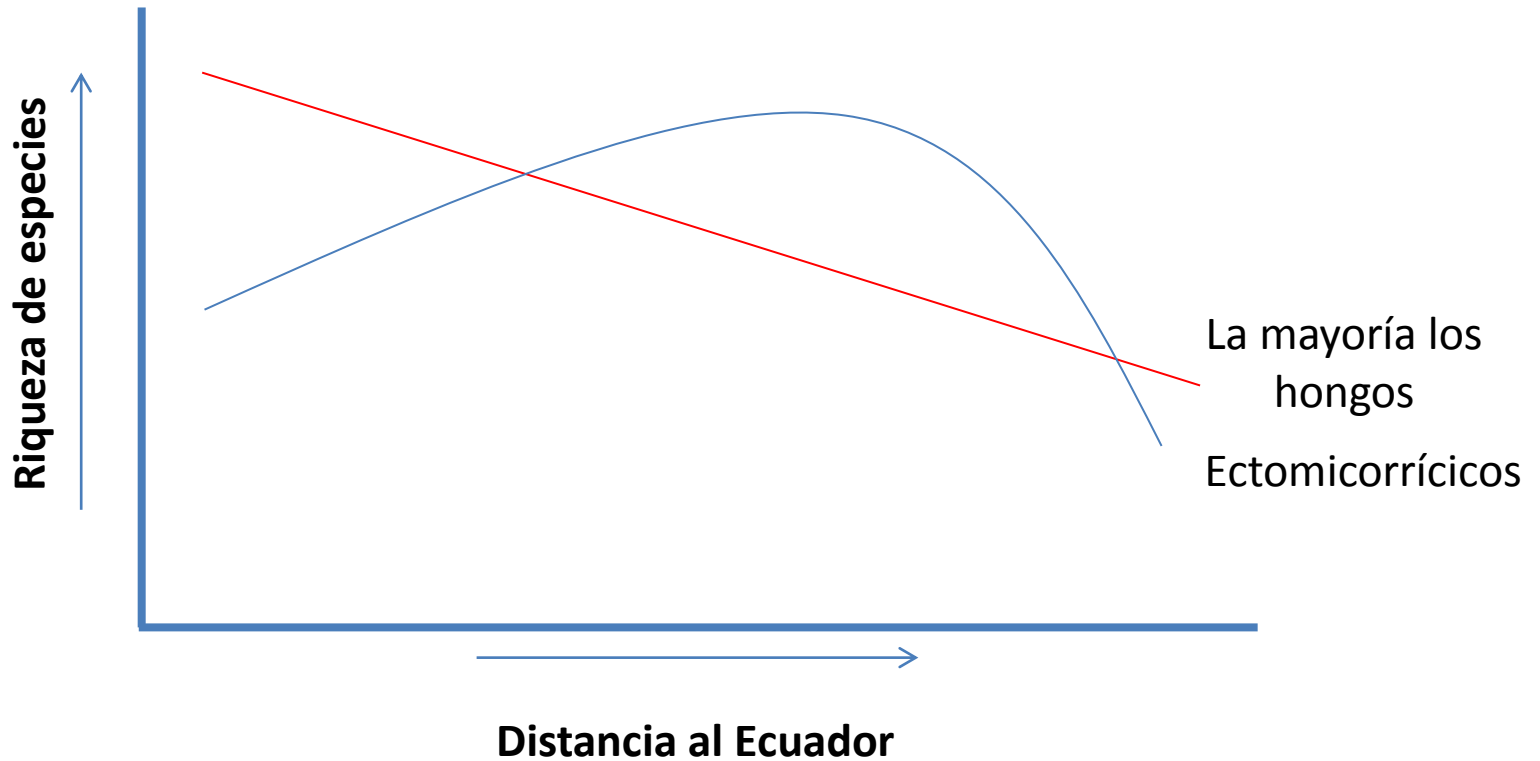
Terrestrial Major Habitat Types

- Tropical & Subtropical Moist Broadleaf Forests
- Tropical & Subtropical Dry Broadleaf Forests
- Tropical & Subtropical Coniferous Forests
- Temperate Broadleaf & Mixed Forests
- Temperate Coniferous Forests
- Boreal Forests/Taiga
- Tropical & Subtropical Grasslands, Savannas & Shrublands
- Temperate Grasslands, Savannas & Shrublands
- Flooded Grasslands & Savannas
- Montane Grasslands & Shrublands
- Tundra
- Mediterranean Forests, Woodlands & Scrub
- Deserts & Xeric Shrublands

Patrón general de distribución de la biodiversidad

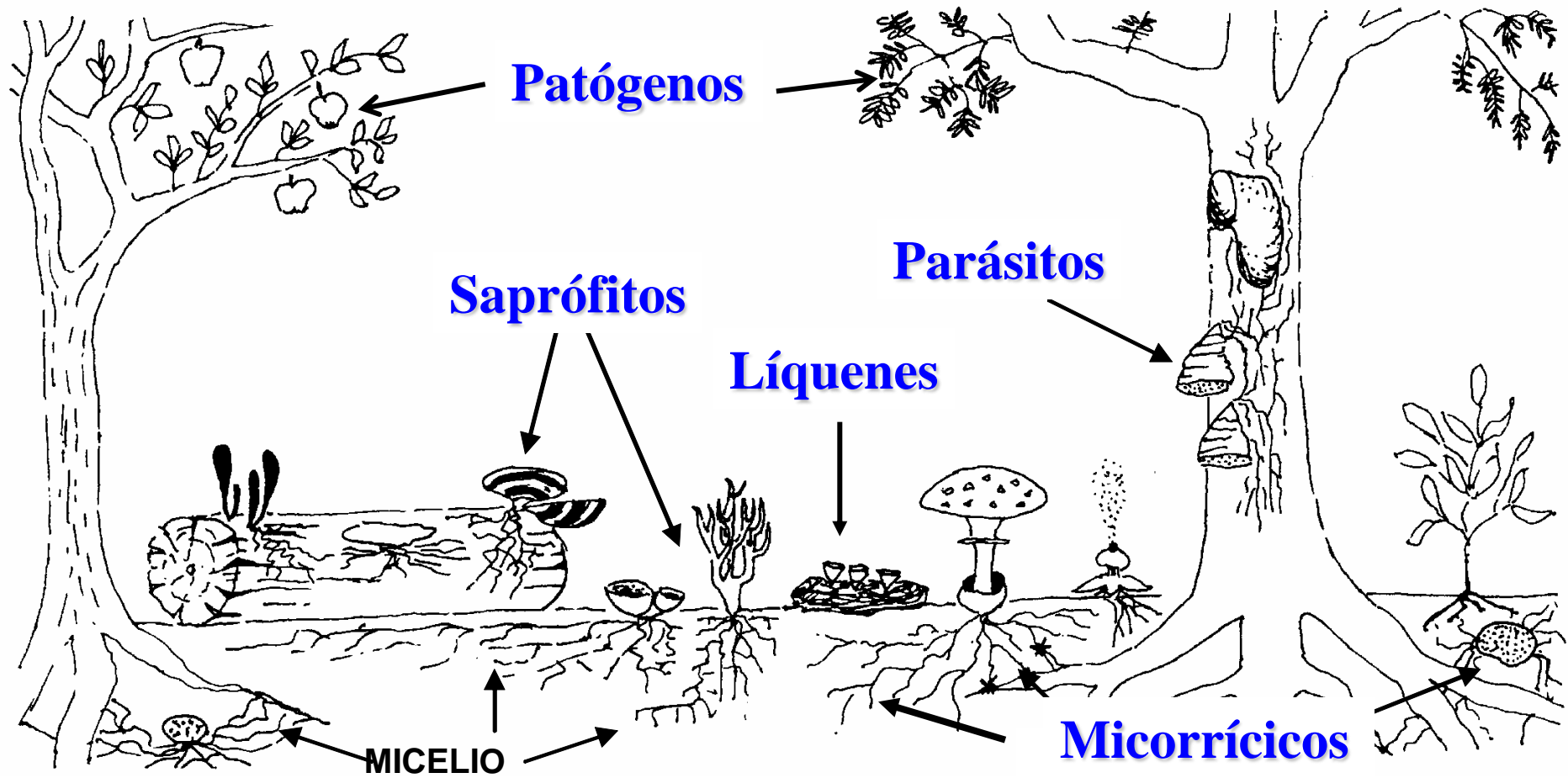


Patrón general de distribución de hongos

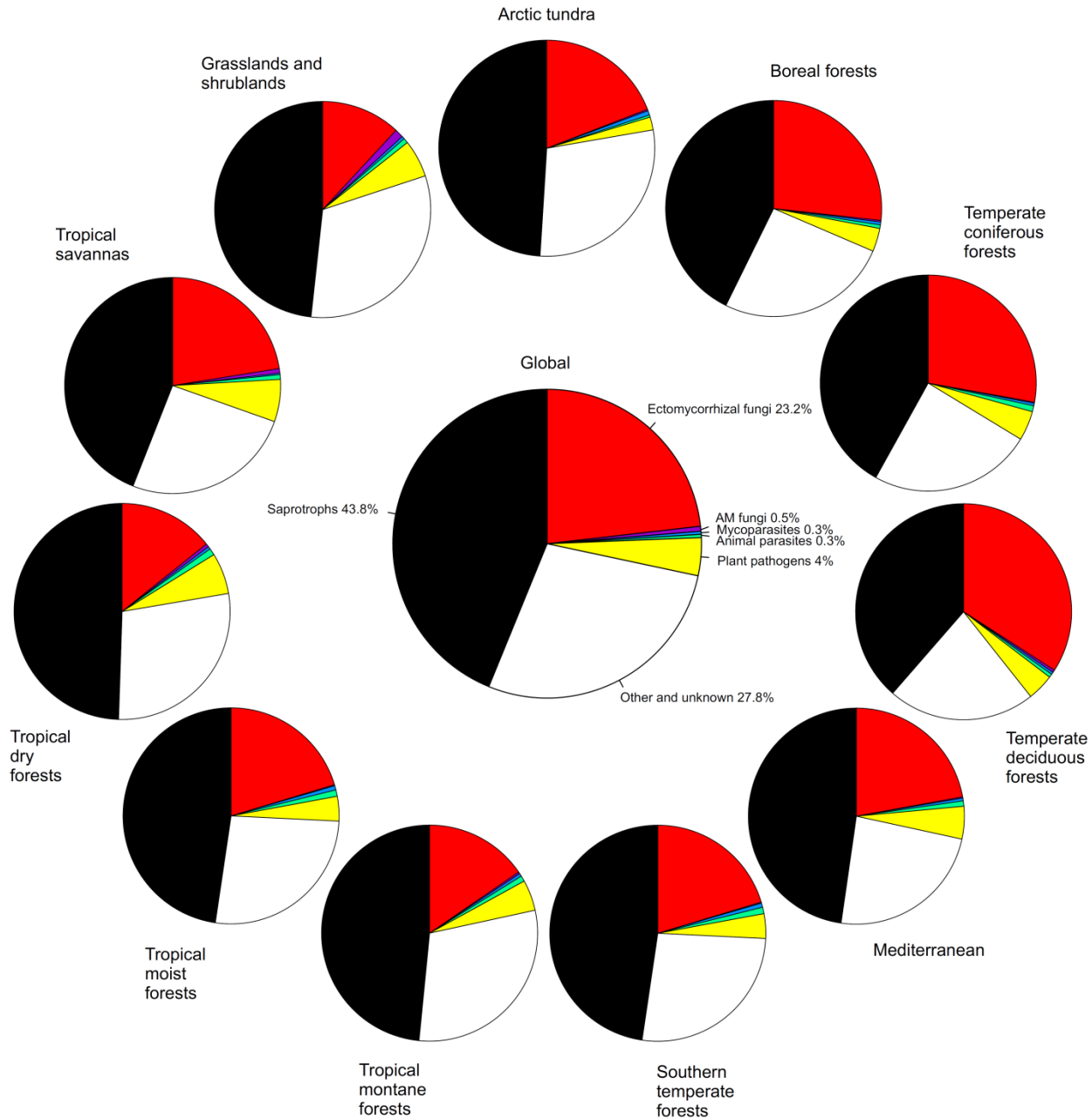


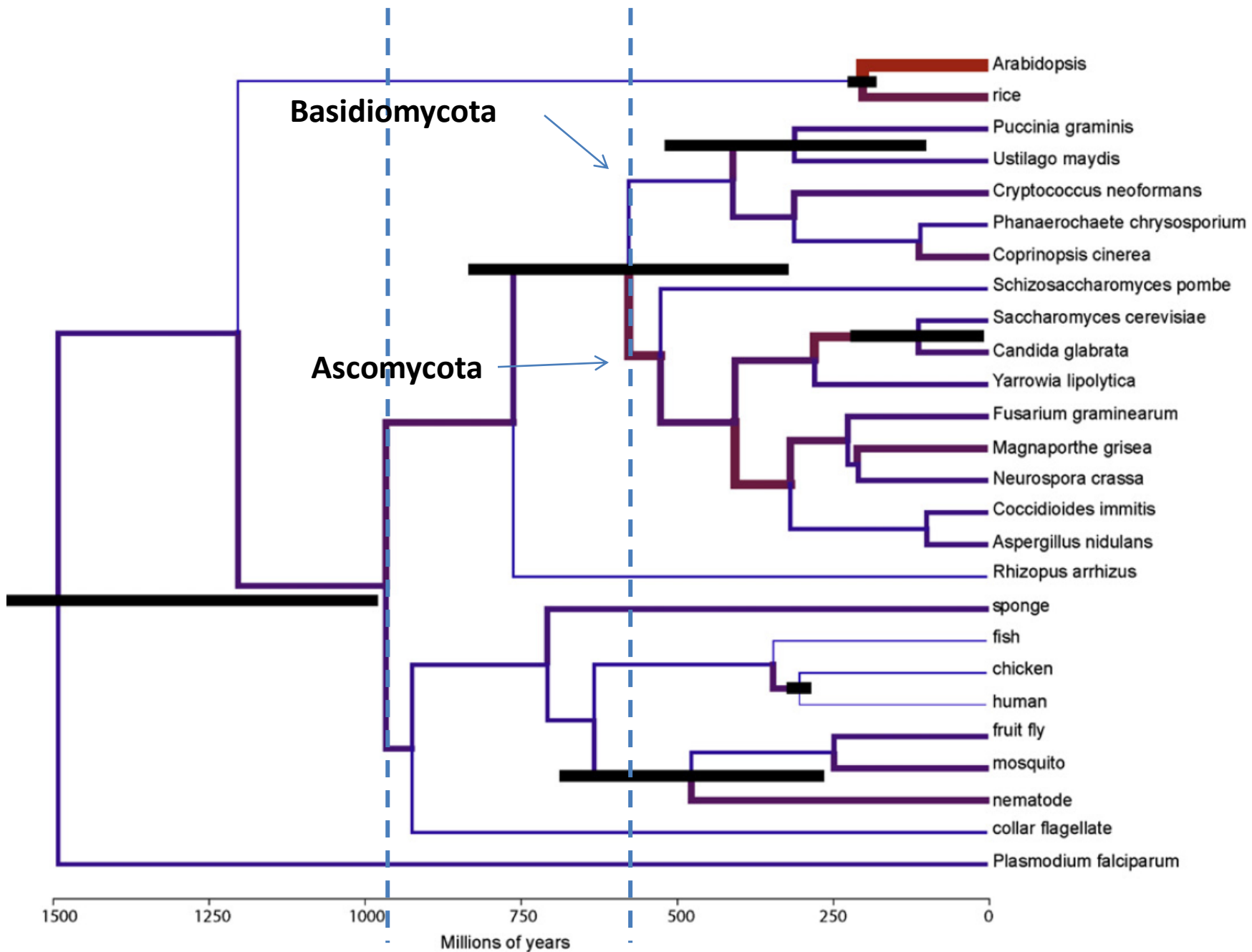
**¿Con qué se relaciona esa
distribución?**

Principales hábitos nutricionales

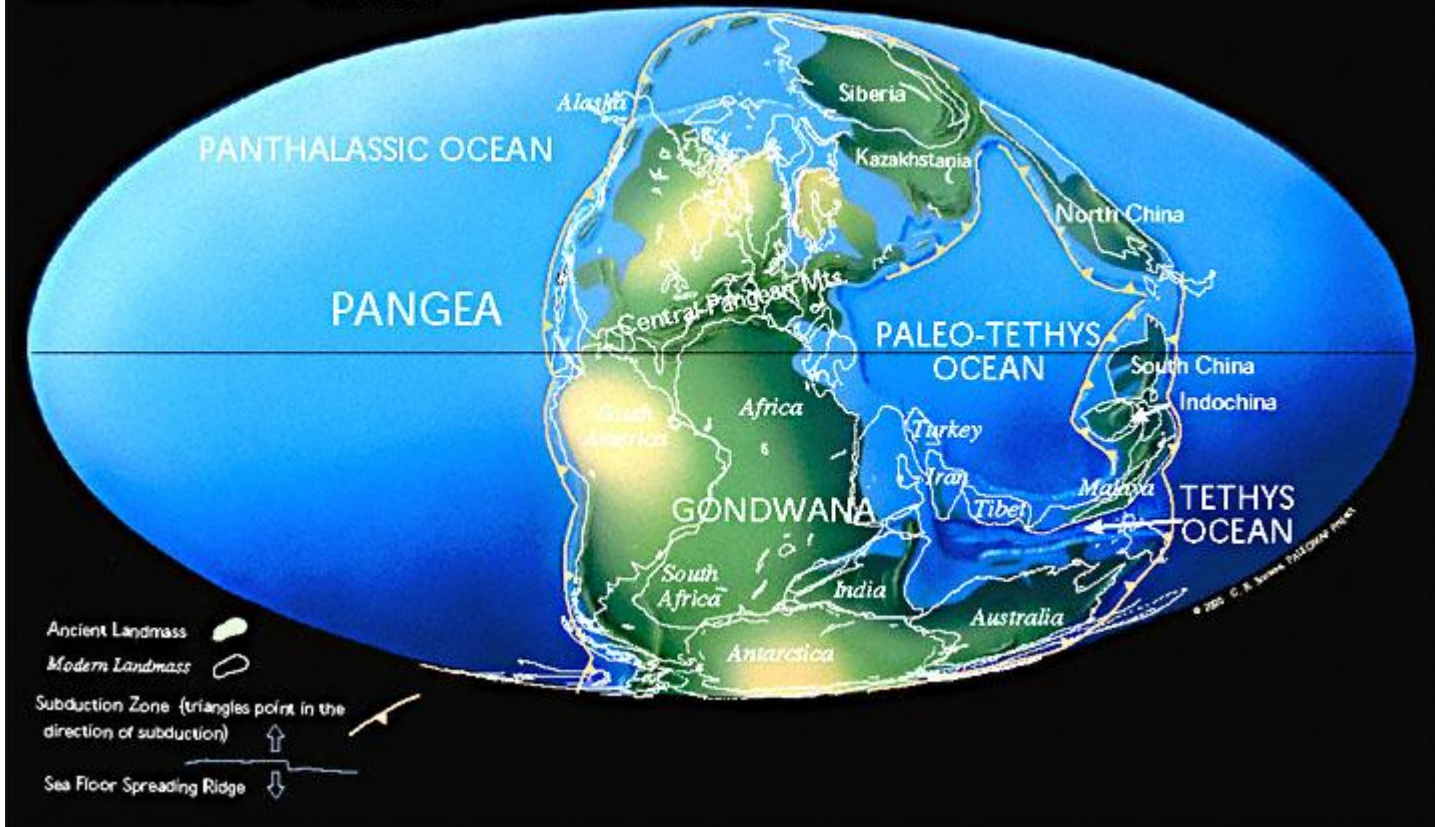


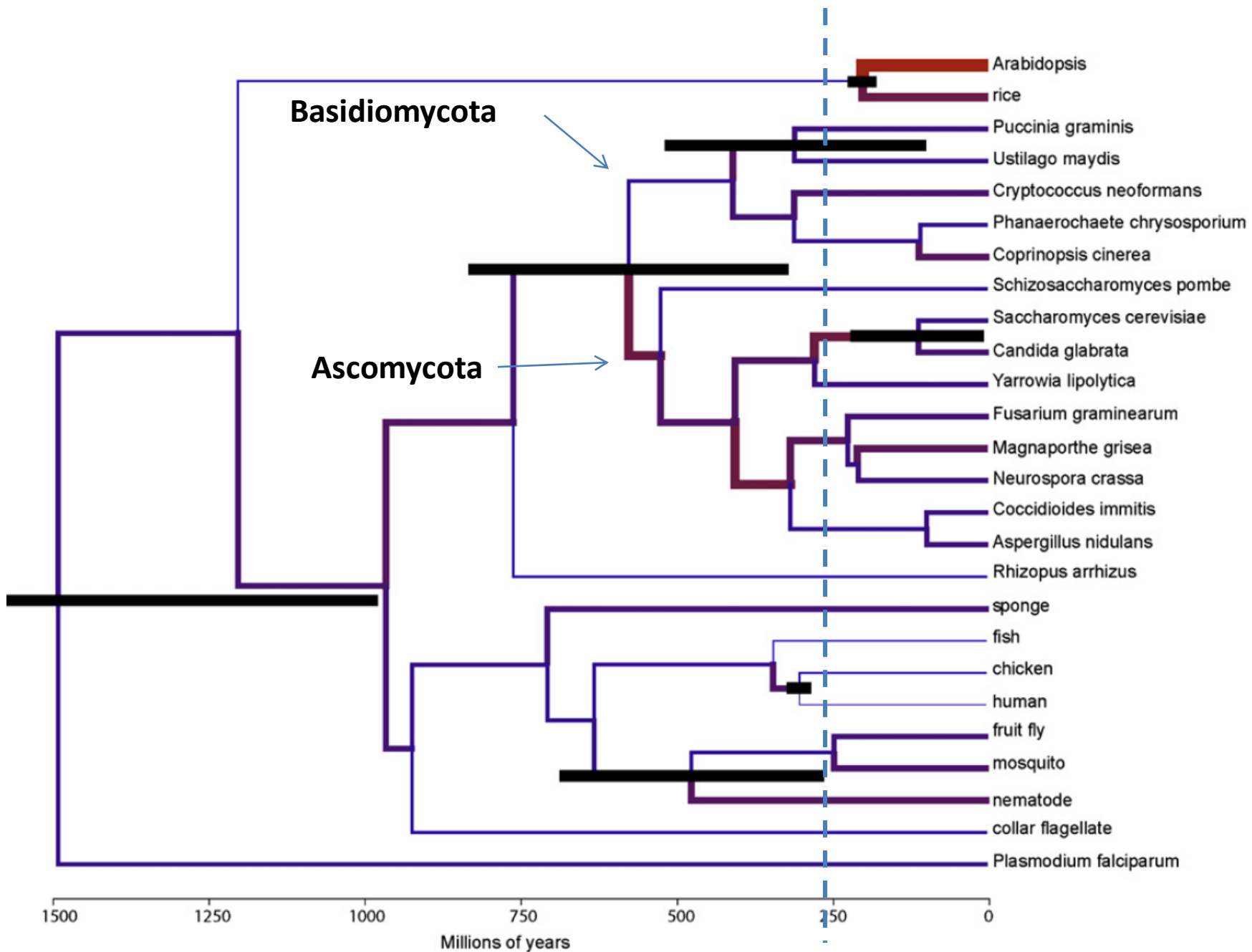
Hábitos nutricionales y distribución de los hongos



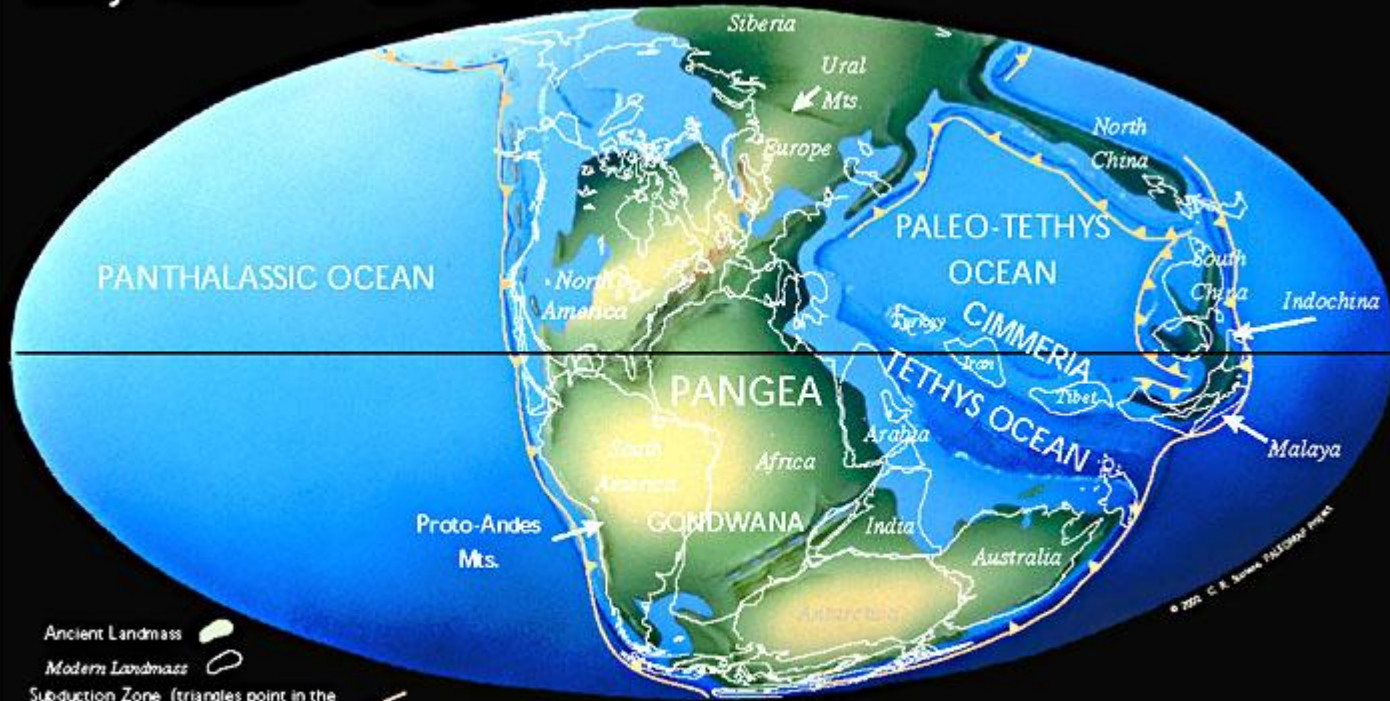


Late Permian 255 Ma





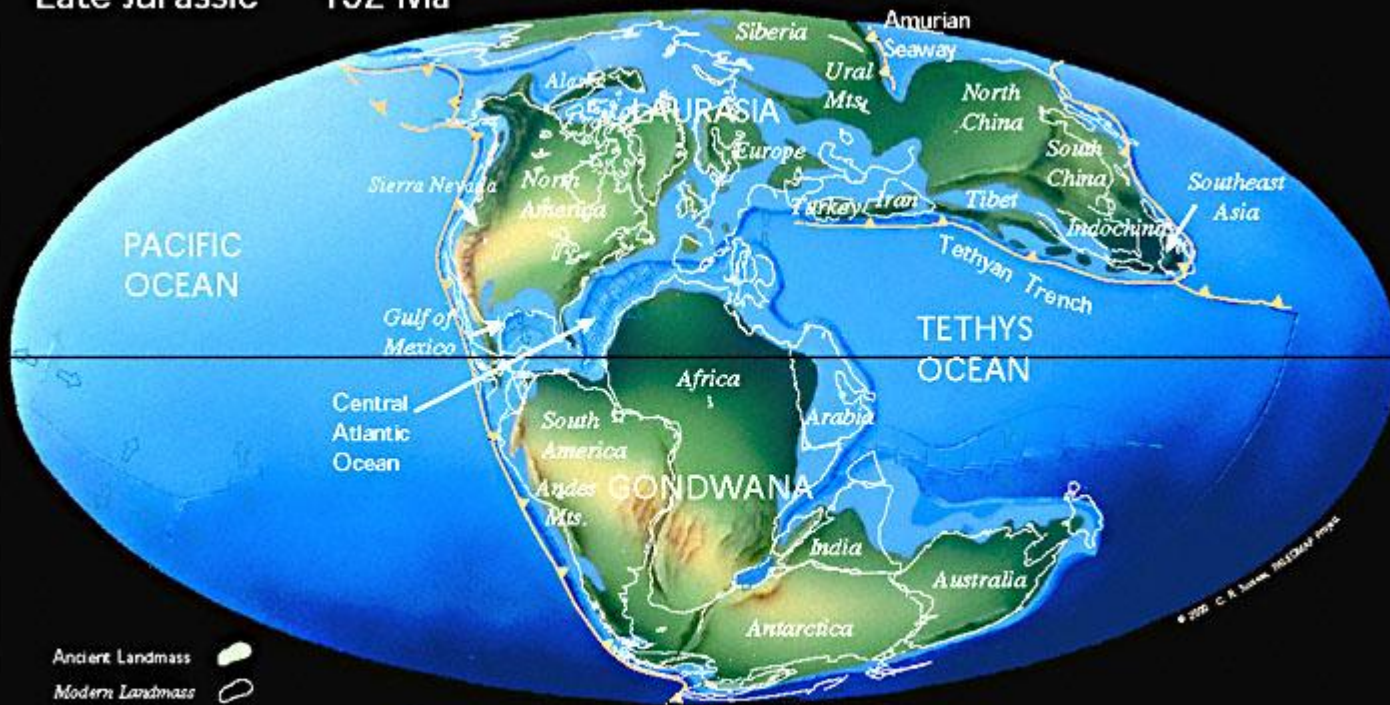
Early Triassic 237 Ma



© 1997 C. R. Scotese, PALEOMAP PROJECT

- Ancient Landmass
- Modern Landmass
- Subduction Zone (triangles point in the direction of subduction)
- Sea Floor Spreading Ridge

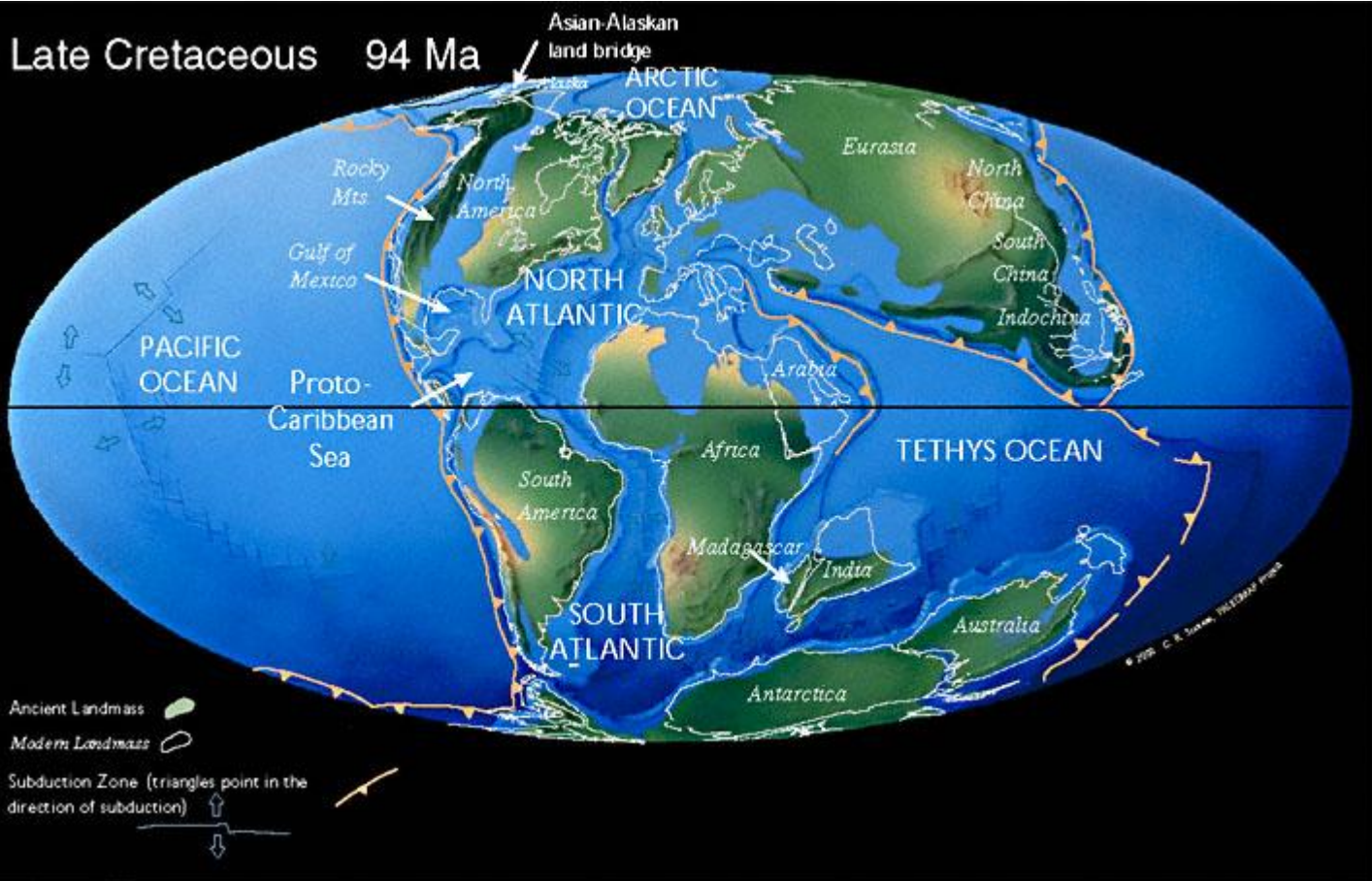
Late Jurassic 152 Ma



- Ancient Landmass (represented by a solid green shape)
- Modern Landmass (represented by a dashed green outline)
- Subduction Zone (triangles point in the direction of subduction)
- Sea Floor Spreading Ridge (represented by a line with arrows pointing away from it)

© 2000 C. R. Scotese, PHOENIX


Late Cretaceous 94 Ma



Middle Eocene 50.2 Ma



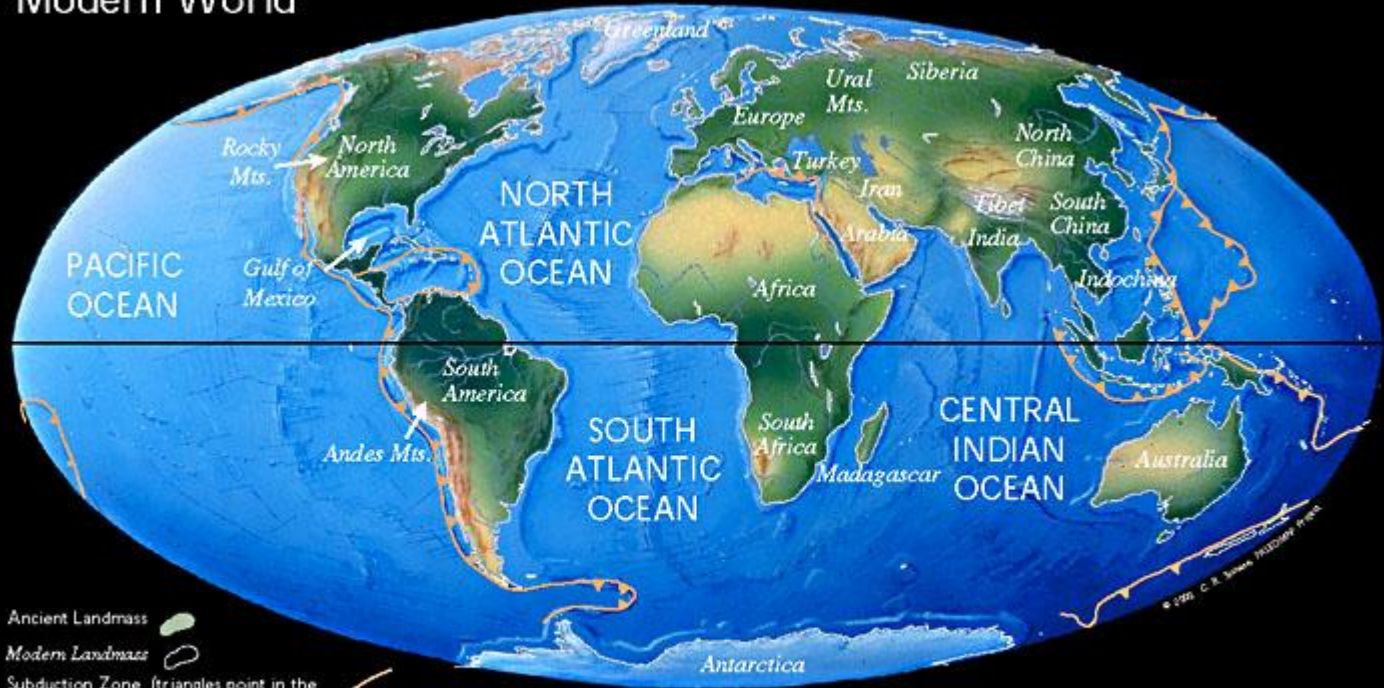
Ancient Landmass 
Modern Landmass 

Subduction Zone (triangles point in the direction of subduction) 

Sea Floor Spreading Ridge 

© 1995 C. R. Scotese, Tectonic Press

Modern World



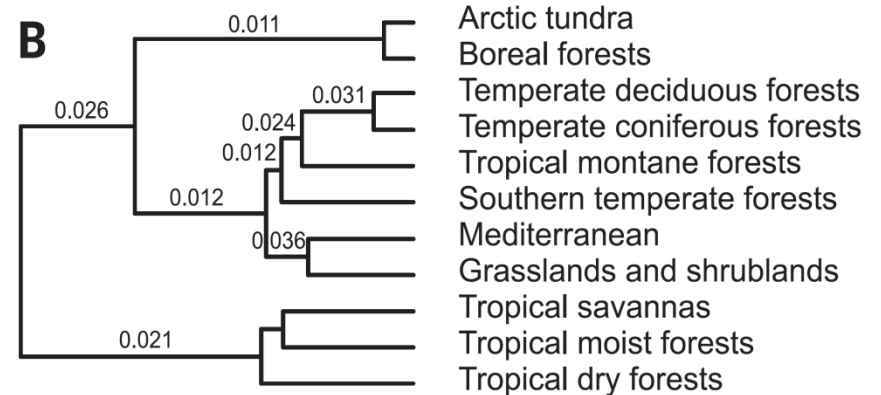
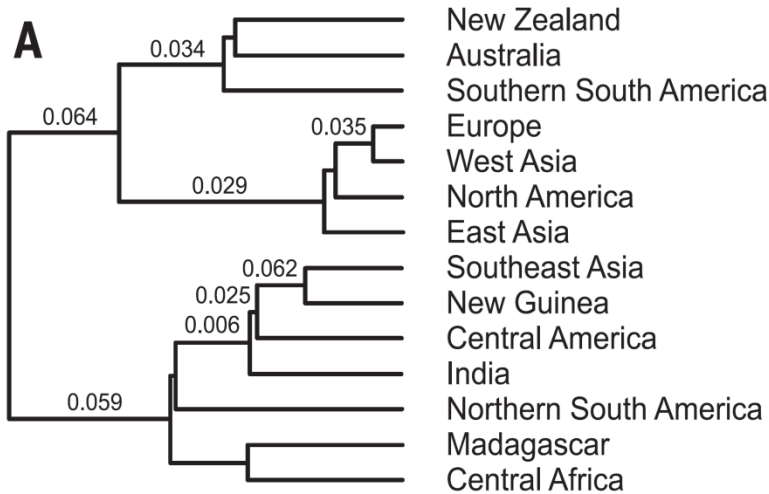
- Ancient Landmass
- Modern Landmass
- Subduction Zone (triangles point in the direction of subduction)
- Sea Floor Spreading Ridge

© 1992 C. R. Scotese PROGRESS PICTURES

Análisis de conglomerados en función de la composición global de hongos

Regiones

Biomás



Síntesis

¿Con qué se relaciona la distribución de los hongos?

La distribución de los hongos se relaciona con factores actuales e históricos

Factores actuales: bióticos y abióticos

Abióticos: Clima y propiedades del suelo

Bióticos: modos de nutrición e interacciones biológicas